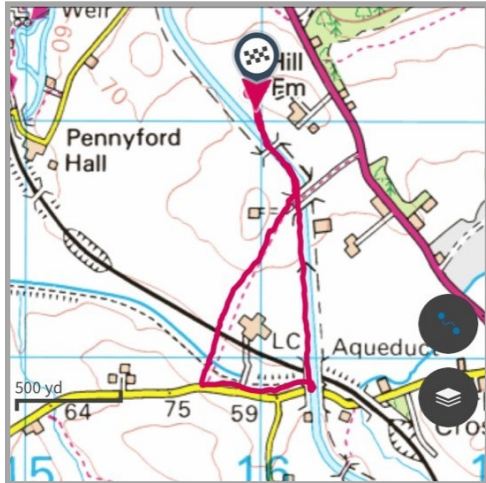




Edstone Aqueduct Circuit

A moderate walk crossing farmland, the railway and the longest Aqueduct in England.



Distance: 2.1 Miles

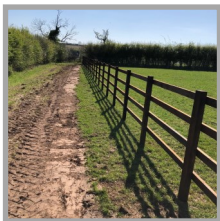
Time: 45 mins

Roads: Short Section

Difficulty: Moderate

Directions

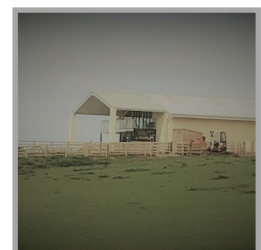
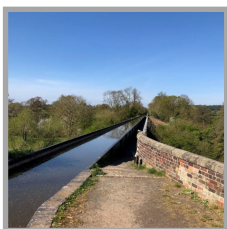
From the outside seating area take the wooden gate and walk diagonally down the field to the silver gate at the canal. Follow the canal to the left and exit by the steps at bridge 56.



Cross the bridge and take the kissing gate on your left into a field, continue to follow the footpath across fields until you can cross the railway, keep going through the fields until you reach the road.



Turn left at the road immediately you pass under the Aqueduct climb up the steps turn right, cross the aqueduct and continue along the tow path back to bridge 56 where you can retrace your steps back to The View.



Caution you will need sensible footwear as the route can get muddy and slippery. You will be crossing working farmland keep all gates shut and please keep your distance from grazing sheep or cattle.